

acaulis = stemless
aestivalis = flowering in spring
alba = white
altissima = tallest
america = from America
angustifolia = narrow-leaved
annua = annual
-antha = -flowered
arctica = from the arctic
argentea = silvery
arvensis = of the field
barbata = bearded, hairy
borealis = from the north
caespitosa = dense
campanulata =, like a bell
carpa = large-fruited
chrysantha = yellow
compacta = compact
decidua = deciduous
densiflora = dense-flowered
digitata = with five lobes
edulis = edible
flava = yellow
-flora = -flowered

florida = floriferous
-folia = -leaved

fruticosa = shrubby
gigantea = giant
glabra = smooth
graminifolia = with grassy leaves

grandiflora = large-flowered
grandis = big
hirsuta = hairy
hispida = bristly
inodora = unscented
lanata = woolly
lanceolata = lance-shaped (leaves)
latifolia = wide-leaved
longiflora = with long flowers
longifolia = with long leaves
lutea = yellow
macro- = large-
magna = big
maritima = maritime, near the sea
maxima = biggest

micrantha = small flowered
microphylla = with small leaves
minima = small
minor = smaller
multiflora = many flowered
muralis = growing on walls
nana = small
nocturna = nocturnal
odorata = perfumed
officinalis = with herbal uses
ovalifolia = with oval leaves
pallida = cream

palustris = from marshes
parvi- = small

pauci- = few-

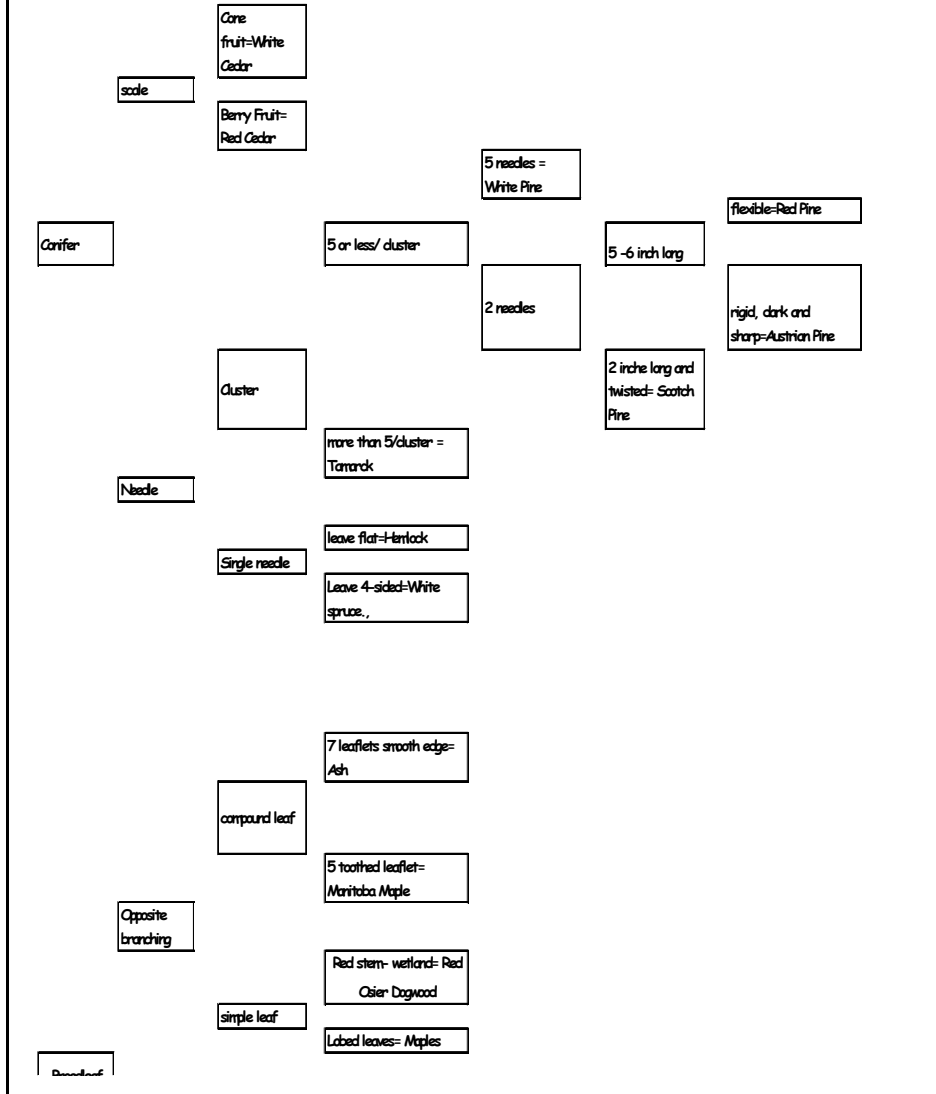
pratensis = field

pendula = hanging
perennis = perennial
-phylla = -leaved

pinnata = with pinnate leaves
poly- = many

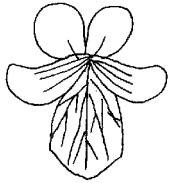
procumbens = creeping
prostrata = prostrate
purpurea = deep pink
phylla = with leaves
rivalis = from near rivers
rosea = rose pink
rotundifolia = round-leaved
rubra = red
sanguinea = blood-red
sativa = cultivated
semperviva = perennial
spicata = spiked
spinosa = spiny
stellata = starry
sylvestris = of woods
tenuifolia = narrow leaves
tomentosa = tomentose, woolly
trifoliata = three-lobed leaves
umbellate = flowers in an umbel
vernalis = of spring
villosa = hairy
violacea = violet
viridis = green
vulgaris = common

Tree Key

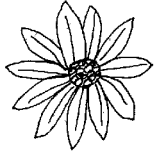


Plant ID Features

Flower symmetry



Bilateral (just like you)

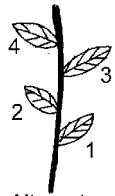


Radial (wagon wheel)

Leaves arrangement



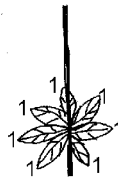
Basal



Alternate



Opposite



Whorled

Leaves type



Smooth



Toothed



Lobed



Divided

You Name It

Plant #	Symmetry	Leaves arrangement	Leaf type	What you called it
1				
2				
3				
4				
5				
6				
7				
8				
9				
10				

Latin word and meaning

alba=white
 amabilis=lovely
 crassus=thick
 dentosus=toothed
 flori=flower
 folia=leaves
 glaber=smooth

grandi=big
 lanceus=lance-like
 mega=huge
 micro=small
 saccharatus=sugar
 pubescens=downy
 tri-three

For more Latin words, check out
<http://www.theseedsite.co.uk>