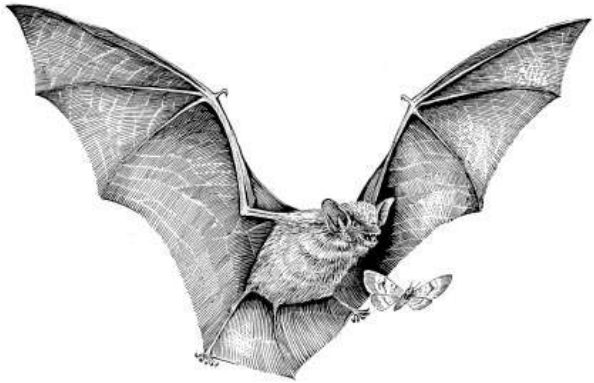


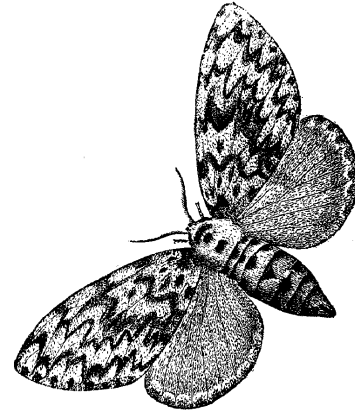
Bat

Heavy. Needs a strong plant to land on.



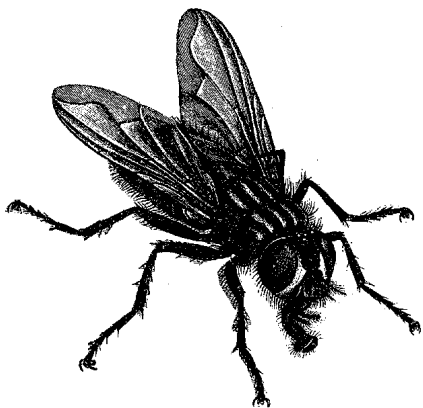
Moth

Flies at night. Smells out the flower. Has a long tongue.



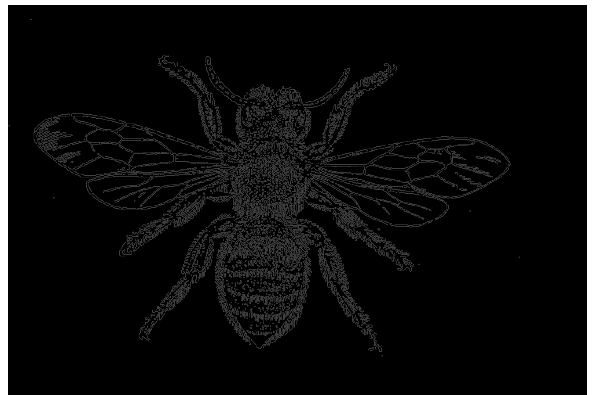
Fly

Clumsy flyer. Likes stinky smell.



Bee

Good Flyer. Likes blue and yellow flowers. Likes dark lines that lead to a landing platform.



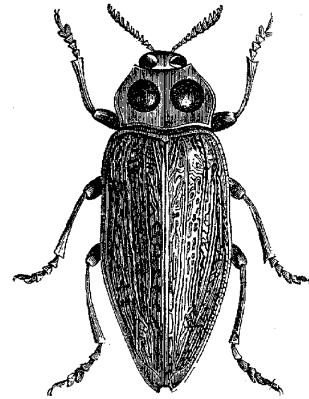
Wind

Carries around lots of light pollen.



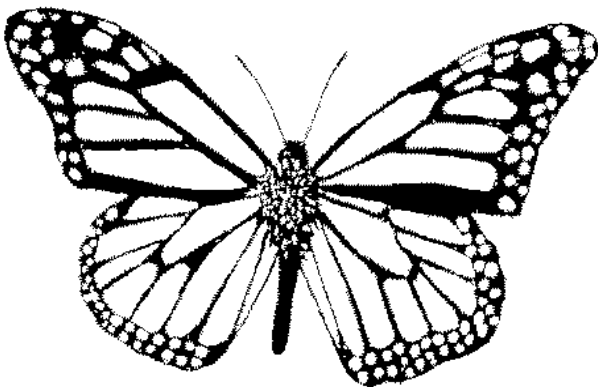
Beetle

Clumsy flyer that likes bland smell.



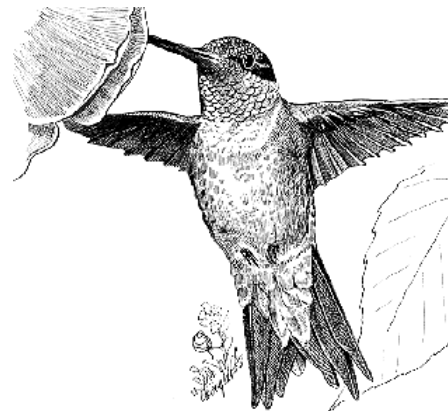
Butterfly

Long tongue that reaches for tube flowers. Likes strong sweet smell. Active during the day.



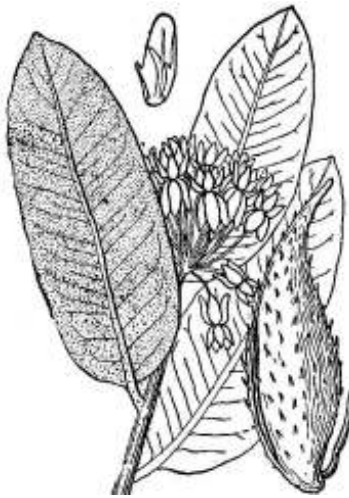
Humming Bird

Long narrow beak. Good for tube flowers. Loves nectar. Likes red colour. Cannot land.



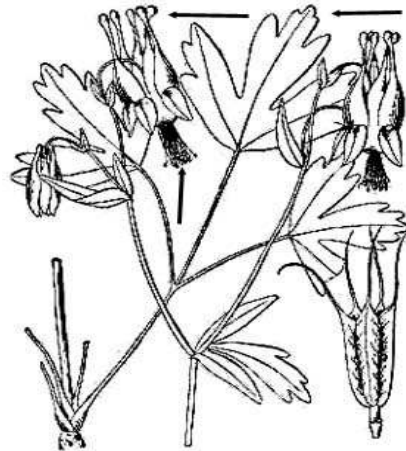
Milkweed

Small tube shaped flowers.



Columbine

Yellow and red flower.
Nectar bulb at the end of petal.



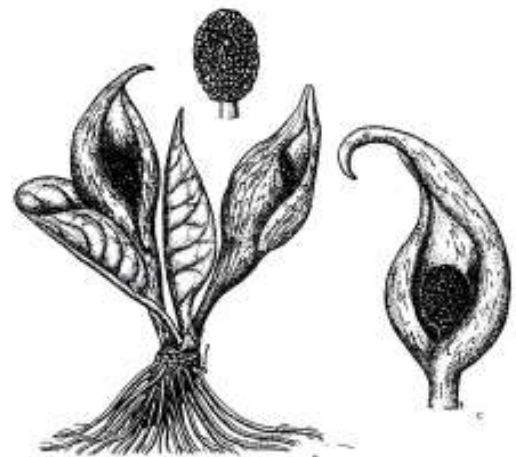
Nicotina

White fragrant flower that opens at night.



Skunk Cabbage

Stinky green and red flower.



Birch

Small flowers, lots of pollen.



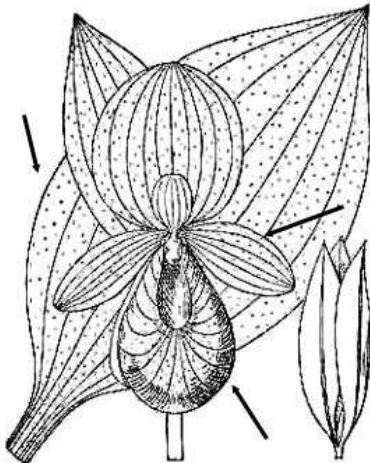
Dandelion

Large surface for landing.
No smell.



Orchid

Big rounded petals.
Runway for landing.



Cactus

Strong sturdy stem

